



EVENTS

- | | |
|--|---------------|
| • EGSC Australia Day Awards 2026 | 21 January |
| • Facial Eczema in Livestock Webinar | 4 February |
| • Gippsdairy Euthanasia Livestock Workshop Orbost | 18 February |
| • Evoke International Agrifood Innovation event | 17 - 18 Feb |
| • East Gippsland Business Networking Event with Kim Kleinitz | TBC February |
| • Renew Expert Webinars: Solar, Electric Vehicles, Batteries | Feb - April |
| • ABARES Outlook 2026 – A Forum to exchange and test ideas | 3 - 4 March |
| • Orbost Show | 9 March |
| • Workshop Future-Proofing Your Family Farm Business | 25 - 26 March |
| • Save the Date: FFG Workforce Development Framework | 12 May |

FUNDING / SUPPORT

- Industry Growth Program
- Dry seasons support
 - Primary producers – drought support
 - Farm advisory service 2026 one-on-one consultations Reopen Now
 - Rural Financial Counselling Service
 - 2026 New Funding for Look Over the Farm Gate events Reopens 16 Jan
 - VFF Financial Capability Service
 - Plant Biosecurity Permits
 - Other: Commonwealth Assistance Programs
- Extra Support for fire affected farmers
 - NFF online link to charities for donations
 - VFF Emergency Fodder Support Program and Agistment of Stock
 - Rural Aid
 - East Gippsland Water

COMMUNITY FUNDING

- | | |
|---|----------------|
| • Agroforestry Grower Reserve Fund | Closes 2 Feb |
| • Gippsland Community Foundation's New Grant Round Open | Closes 28 Feb |
| • Strengthening Rural Communities - Prepare & Recover | Close 24 March |

SURVEYS & OPPORTUNITIES

- | | |
|--|-----------------|
| • Nominate your favorite EG town in 100 Best Towns in Australia | Closes 27 Jan |
| • Nowa Nowa Game Meats Hub Pilot | Closes 31 Jan |
| • 2025/2026 Leadership and Mentoring Program Open Now | Closes 1 Feb |
| • Lambex | |
| • Biosecurity preparedness for key grain business survey | |
| • Igniting Leadership Program Now Open | Closes 17 Feb |
| • Women in STEM and Entrepreneurship Round 5 Open | Closes 18 Feb |
| • Calm The Farm Workshops: Supporting Mental Health in Agriculture | |
| • Business Skills Mentoring Program | Closes 27 March |

INFORMATION

- Rural Aid
- Victoria Gives Virtual Fencing the Green Light
- Tomato Potato Psyllid
- Soil Moisture Probe update #31 Key messages
- Gippsland Community Legal Service
- Clean up Australia - 35 years of cleaning up together
- Coping With Emergencies and Disasters
- Take a Break – explore NCFH website

COUNCIL INFORMATION

- East Gippsland Livestock Exchange Sale Dates
- Your Say on Projects
- Grants Guru
- Handy Links

EVENTS

EGSC Australia Day Awards 2026

21 January

East Gippsland Shire Council's 2026 Australia Day Awards Ceremony is on:

When: Wednesday 21 January
Where: Lakes Entrance Surf Life Saving Club
Time: Commencing 5.30pm

The shire-wide awards celebrate outstanding contributions by residents in three categories: Citizen of the Year, Young Citizen of the Year, and Community Event of the Year.

The event will feature live entertainment, a free barbecue, and a keynote address by Australia Day Ambassador Dr Patrick Kinsella, a respected Lakes Entrance community member.

Everyone is welcome to attend and celebrate what makes East Gippsland special. RSVP for catering: Call (03) 5153 9500 or email civicevents@egipps.vic.gov.au.



Dr Patrick Kinsella, East Gippsland's 2026 Australia Day Ambassador

Facial Eczema in Livestock Webinar

4 February

Maffra and Districts Landcare have Graeme Sait from Nutri-Tech Solutions doing a video link to the Newry Hall on 4 February to talk about a range of options for managing Facial Eczema.

Graeme Sait is an expert in nutrition and biological farming, with a passion for sharing his insights on managing facial eczema by treating the root cause. He will explain the disease, how it functions and how we can treat it with on-farm microbial multiplications, multispecies pastures and mineral applications.

Date: Wednesday 4th February 2026
Time: 10.30am - 11.30am
Location: Online & Newry Hall Upper Maffra Mechanics Institute Newry

To book either call Callam 0401 795 026 or via this link
<https://www.trybooking.com/events/landing/1522867>

Gippsdairy Euthanasia Livestock Workshop Orbost

18 February

This 1-day practical course provides participants with knowledge of legal responsibilities and skills to safely and humanely euthanise sick, injured or unsaleable dairy cattle. The workshop includes a practical session on use and maintenance of the Blitz-Kerner Captive Bolt.

This course will cover:

- Best practice animal welfare standards for humane euthanasia of cattle
- Options for humane euthanasia of cattle
- Management of euthanasia including confirmation of death in cattle

When:	February 18
Where:	Orbost venue tba after booking
Time:	10.00am to 1.00pm
To Book:	Euthanise Livestock Training Orbost Dairy Australia

Evoke International Agrifood Innovation event

17 – 18 February

Hear from 80 of the industry's most influential global agrifood technology leaders from Australia and around the globe, this event led by AgriFutures Australia, evoke^{AG}, is a leading event that unites the agrifood innovation community across the Asia Pacific and around the world.

Evoke^{AG} happening in Melbourne is bringing the brightest minds in agtech, food production, research and agricultural investment, providing a location for entrepreneurs and growing companies to showcase their work, live demonstrations, food and beverage experiences and interactive sessions designed to inspire, inform, and drive collaboration.

When: 17-18 February 2026
Where: Melbourne Convention Centre
To Book: [evokeag. 2026 - evokeag.](#)

The **International Agrifood-Tech Pitch Event 2026** will feature at evokeAG 2026, hosted by Farmers2Founders in partnership with Invest Victoria and Agriculture Victoria, this tailored pitch event will showcase twelve exceptional Agrifood-tech innovators from around the world. Book separately to the main event.

When: 17 February Tuesday night of Evoke
Time: 6.00pm to 9.00pm
To Book: <https://events.humanitix.com/international-agrifoodtech-pitch-challenge-2026>.

East Gippsland Business Networking Event with Kim Kleinitz

TBC February

East Gippsland Marketing Inc invites you to a valuable networking opportunity in Bairnsdale during the third week of February 2026.

This session will feature **Kim Kleinitz**, presenting "*Navigating the New Psychosocial Hazards Regulations: Turning Psychological Safety into Your Superpower.*" Gain insights into the latest regulations and discover strategies to foster a safe and thriving workplace culture. Contact EGMI for more information [Home | East Gippsland Marketing Inc.](#)

Renew Expert Webinars: Solar, Electric Vehicles, Batteries

Feb - April

East Gippsland Shire Council, South Gippsland Shire Council, Wellington Shire Council, Latrobe City Council and Bass Coast Shire Council have partnered with non-profit organization **Renew** to deliver a series of webinars presented by experts and focused on making your building and community more sustainable.

These 90 min webinars are free. This quarters series is on Solar and Electric Homes. For more information: [sustainable living series](#) | [community action portal](#) | [the cap](#)

Solar and Electric Homes Series	Time	Date
Introduction to solar	7pm	Thurs 26/2
Home battery storage	7pm	Thurs 12/3
All-electric homes	7pm	Thurs 26/3
Electric vehicles	7pm	Thurs 16/4



ABARES Outlook 2026 – A Forum to exchange and test ideas

3 - 4 March

On 3- 4 March 2026 join industry leaders, innovators and policymakers for 2 days of insights, networking and future-focused discussion in Canberra or online.

The conference will explore the current state of agriculture, fisheries and forestry, with a focus on opportunities for growth and development.

With the theme **Reset. Rethink. Regrow: cultivating tomorrow's opportunities**, the conference will explore what will shape Australian agriculture, fisheries and forestry into the future.

For more details about the program, speakers and registration, visit [ABARES Outlook Conference 2026 - DAFF](#).

Orbost Show

9 March

Save the Date for the Orbost Show 'Celebrating 40 years of Landcare'. The show will be on the Labour Day Weekend Monday, the 9 March, at the Newmeralla Show Grounds. See shearing, a horse corn grinder, hand spinning, the solar powered trailer, be in the silage wrap disposal trials, print a t-shirt, and there are fire wise plants to give away, with this year's guest presenter Pip Courtney from Landline.



For information contact Josh Puglisi on 0419 317 509 or Tiwana Merrit on 0414 801 703

Workshop Future-Proofing Your Family Farm Business

25 – 26 March

Agriculture Victoria invites you to attend a complimentary 2-day workshop at Sale on 25 and 26 March to help 'Future proof' your family farm business.

Highly regarded presenter, Dr Kate Burke, has extensive experience across the technical, commercial and people-focused aspects of farming. She has worked for many years as a consulting farm adviser.

Past participants have provided excellent feedback and developed individualised plans to set up their businesses for future years.

Participants will:

- Work out what's most important to them.
- Understand the productivity, people and profit components of their business.
- Identify strategies for balancing growth and risk.
- Prioritise and plan.

Participants are eligible to review their business plans post this workshop in a one-on-one session with Kate.

When: Wednesday 25 & Thursday 26 March 2026
Time: 9 am - 3 pm each day
Where: Sale Greyhound Club
Sale Showgrounds Maffra-Sale Rd



Numbers are limited and registration is essential as the event is catered. Register at <https://www.trybooking.com/dhysg> or scan the QR code.

For further information contact AgVic on 0428 316 018 or James Paulet 0447 695 839.

Save the Date: FFG Workforce Development Framework

12 May

Across Australia's regional, rural and remote areas, the vocational education and training (VET) sector is challenged in growing and sustaining a workforce who can suitably train workers for our essential industries – creating a need for practical, feasible and industry-led attraction and retention solutions for the VET workforce.

You're invited to participate in a roundtable and networking event designed to provide opportunities to contribute to several related projects and support the development of local connections.

This event will explore a workforce development framework that supports career pathways across food & fibre industries, including vet teaching skills and trade careers in agriculture/horticulture.

Employers, training providers, industry partners, business support services, local government, and community organisations are encouraged to join.

When: Tuesday, 12 May
Time: 10.00am – 3.00pm
Where: TBC

Agricultural workforce shortages mirror broader industry gaps. By working together, we can design practical solutions for the future of apprenticeships and trade careers in agriculture/horticulture and how to better support apprentices, employers, and trainers.

See [webpage](#) for more information and register at: [Gippsland Event Tuesday, May 12, 2026](#).

Also watch the Gippsland Ag social media pages for several upcoming events or check their website at [Gippsland Ag](#).

FUNDING / SUPPORT

Dry seasons support

Drought support is available for farmers across Victoria. This includes the [farm drought support grants](#) program which is available to assist primary production businesses, including horticulture, to implement on-farm infrastructure improvements and undertake essential business activities that improve drought. [Drought support package for Victorian farmers | Grants and financial support | Drought support | Farm management | Agriculture Victoria](#)



Supports listed here:

❖ **Primary producers – drought support**

Apply for a farm drought support grant to undertake drought management activities. Eligible primary producers across the state can access up to \$5,000 (ex-gst) as a co-contribution grant on a dollar-for-dollar basis.

Farmers can claim expenses on eligible activities since 30 September 2024. For program guidelines, a list of eligible drought management activities and to apply visit www.ruralfinance.com.au/grants/. Find more information on drought support: agriculture.vic.gov.au/drought or call 136 186.



❖ **Farm advisory service 2026 one-on-one consultations**

Reopen Now

A free consultation with a farm advisor to take stock, discuss and plan the best way forward for your business. Nominate your preferred consultant from a panel of providers for a 3-hour consultation (on-farm or virtually) and a follow up call. **Farmers across the state can now access a second one-on-one consultation.**



The farm advisory session aims to:

- identify key business and farm risks, stress and/or pressure points
- conduct feed and/or water budgets, or other analysis
- explore options and trigger points for the short, medium and long term, e.g. Whether to de-stock or lease
- provide referrals to other support services where relevant.

Eligibility Guidelines apply. Scan the QR code for more information and to express your interest.



❖ **Rural Financial Counselling Service**

The Rural Financial Counselling is a **free, confidential and independent service that can provide information**, options, decision-making support and referral services to farmers and small rural related businesses who are in, or at risk of, financial hardship. A rural financial counsellor can visit farmers where they are most comfortable either at their residence, farm or place of business. They can assist with business planning, creditor negotiation, cash flow management, accessing Government and Industry support programs and referrals to other Professional services.

NEX Business Farming Wellness delivers the Rural Financial Counselling Service across Gippsland. Please call 1300 045 747 or visit [NEX • Business, Farming & Wellness](#).

TO NOTE: NEX have created the **Backbone Support Directory**, a list of practical support and essential services across the Gippsland region: [Backbone of Support Directory](#)

❖ **2026 New Funding for Look Over the Farm Gate events Reopens 16 Jan**

The 'Look Over the Farm Gate' mental health and wellbeing program provides grants of up to \$5,000 to support local organisations create events and initiatives tailored to their unique community.

A new round of funding opens on the 16 January 2026, with events to be held by 30 June 2026. The program is managed by the National Centre for Farmer Health. Scan the QR code for more information about the program, or go to [look over the farm gate – community grants | national centre for farmer health](#).



❖ **VFF Financial Capability Service**

The Victorian Farmers Federation (VFF) has received funding support a financial capability service through providing a dedicated support program. This has been designed specifically for Victorian farmers navigating financial challenges during drought and recovery periods. Contact the Victorian Farmers Federation for more information on 1300 882 833 or go to [The Voice of Victorian farmers | Victorian Farmers Federation](#).

❖ **Plant Biosecurity Permits**

A free and tailored service to suppliers, transporters and farmers to help them to efficiently navigate the permit requirements to bring feed into Victoria while managing biosecurity risks.



Scan the QR code or go to [Duties and fees relief package | Grants and financial support | Drought support | Farm management | Agriculture Victoria](#) for more information on permit requirements

❖ **Other: Commonwealth Assistance Programs**

Programs and services are available to help farmers impacted by drought. These include the Farm Household Allowance, Rural Financial Counselling Service, concessional loans and tax concessions.

For more information about drought support visit agriculture.vic.gov.au/drought, email drought.support@agriculture.vic.gov.au or phone 136 186. Scan the QR code to find out more.



Extra Support for fire affected farmers

Information on agriculture recovery can be found on the AgVic web site [Bushfires | Emergency management | Farm management | Agriculture Victoria](#) including information on:

- Who to contact if you have urgent animal welfare needs (Vic Emergency Hotline on [1800 226 226](#))
- How to report loss and damage due to fire impacts on-line
- Details on financial support options: [Financial assistance after a bushfire | Bushfires | Emergency management | Farm management | Agriculture Victoria](#) including:
 - Wide range of ongoing support options

- Recently announced Primary Producer Recovery Grants (of up to \$75,000 for eligible primary producers, to help cover the costs of clean-up and reinstating their enterprises).
- Gippsland's Rural Financial Counselling service, NEX business farming wellness: [NEX • Business, Farming & Wellness](#)

○ **NFF online link to charities for donations**

If you are considering support for farmers or regional communities impacted by natural disasters, such as flood, fire and drought, there are several registered charities you can turn to. Some focus specifically on assisting farmers, while others provide broader support to rural communities.

While NFF does not specifically endorse any single charity, they provide links online to registered charities involved in disaster relief efforts, see [natural disaster relief - national farmers' federation](#).

○ **VFF Emergency Fodder Support Program and Agistment of Stock**

Considering the current bushfire crisis, the Emergency Fodder Support Program has been enacted to coordinate the donation of fodder and deliver it to bushfire impacted farmers across Victoria. This Program is a collaboration between the Victorian Government and the Victorian Farmers Federation (VFF). Key information can be found in at [The Voice of Victorian farmers | Victorian Farmers Federation](#)

From this website farmers can register [to receive or donate fodder](#), and transporters can register with the VFF to be eligible for a freight rebate by government.

(This is only available for transporters directly engaged by the VFF Emergency Fodder Program).

On this site you can also list if you are **able to assist with agistment** or if you need to agist stock. [The Voice of Victorian farmers | Victorian Farmers Federation](#).

○ **Rural Aid**

Rural Aid is there for East Gippsland's farmers – before, during and after disasters like the current Victorian bushfires and drought. By registering with Rural Aid, you help them know who you are so they can reach out when support is needed, whether that's financial assistance, mental health counselling, water or fodder. It only takes a few minutes to register at <https://www.ruralaid.org.au/services-provided/>. Once registered, farmers can also apply for support on our services page. If you need additional assistance, call the team on 1300 327 624 or email disasterassistance@ruralaid.org.au Register today.

○ **East Gippsland Water**

EGW are offering free water tokens to eligible households experiencing disruption or contamination of their domestic water supply due to the bushfires with the priority being to support community wellbeing during this challenging period.

This emergency support measure is to help local residents restore essential household water for drinking, cooking, personal hygiene, pets, and essential household uses. The tokens can be collected from EGW's office at 133 Macleod Street, Bairnsdale, and are redeemable at standpipes across East Gippsland.

To receive free tokens, residents must:

- Live in an East Gippsland community impacted by current bushfire activity
- Be an EGW customer or a resident reliant on tank water within the EGW service region
- Have experienced water loss or contamination related to the incident



For more details, see the media release www.egwater.vic.gov.au/free-water-tokens/ or call 1800 671 841 (8.30am to 5pm weekdays).

COMMUNITY FUNDING

Agroforestry Grower Reserve Fund

Closes 2 February

Forestry Australia is calling for proposals for projects that will support farm forestry and agroforestry in Australia. The funding is made available through the Forestry Australia's Grower Reserve Fund, with up to \$ 10,000 available per project.

The purpose of the Grower Fund is to support projects that meet one or more of the following criteria:

- Benefit forestry Australia's forest grower members, particularly those engaged in small to medium scale enterprises including farm forestry and agroforestry.
- To provide resources, produce educational information or undertake projects to support forest growth.
- To support forestry Australia members and branches to conduct field days, mini-conferences, seminars on forest growing.
- To increase the number of grower members of Forestry Australia and,
- To support and encourage Australians to grow more trees.

Submissions close Monday 2 February 2026 at 5pm. Contact Lauren Hayward Growers Secretary or to submit a proposal email: growers@forestry.org.au. For more information go to [call for growers project – 2026 – forestry australia](https://www.forestry.org.au/call-for-growers-project-2026).

Gippsland Community Foundation's New Grant Round Open

Closes 28 February

The East Gippsland Community Bushfire Recovery Grants program is administered by the Gippsland Community Foundation and made possible by the generous support of the donors to the Victorian Bushfire Appeal. The Bushfire Recovery Grants up to \$50,000 program opens 8am on Sunday 1 February and Closes on Saturday 28 February 2026 at 6pm.

Charitable organisations, not-for-profits and community groups are encouraged to apply with projects that offer benefit to East Gippsland fire-impacted communities.

A funding priority will be given to projects and activities that support:

- better communities
- future generations
- climate resilience

Guidelines can be found at [2026 community bushfire recovery grants – east gippsland — gippsland community foundation](https://www.gippslandcommunityfoundation.org.au/2026-community-bushfire-recovery-grants-east-gippsland). Applicants are encouraged to discuss projects prior to application by ringing Michelle 0499 241 917 or Cherie 0426 537 189.

Strengthening Rural Communities - Prepare & Recover

Close 24 March

The Strengthening Rural Communities (SRC) prepare & recover program supports communities in remote, rural and regional communities across Australia to implement initiatives that prevent and prepare for future climate related impacts or recover from existing disasters.

Grants **up to \$25,000** are available for a broad range of initiatives. Priority will be given to projects that:

- Respond to a specific climate impact or event, either historic or likely to occur in the future;
- Focus on community-led resilience building in recovery or preparedness to strengthen the capacity and capability of local people and systems, especially to manage the impact of future disasters, through: inclusion; networks; communication; information sharing; self-organising systems; local decision making; or resourcing, tools and support;
- Are from local community groups and not-for-profits or organisations that do not have DGR status. [Strengthening rural communities – prepare & recover](#)

Applications close 24 March 2026 at 5pm.

SURVEYS AND OPPORTUNITIES

Nominate your favorite EG town in 100 Best Towns in Australia Closes 27 Jan

Australia Traveller Media are full steam ahead for 2026 and thrown themselves into the planning for the 100 Best Towns in Australia to travel to in their promotion campaign.

They would love your help in compiling the ultimate short list that will be the basis for a panel to vote and ultimately decide the 100.

To nominate follow this link [100 Best Aussie Towns - Nominations Survey](#) and complete the simple form. You can nominate up to three towns per category.

Two quick things to bear in mind:

1. It is not mandatory to nominate in all categories OR nominate three towns per category.
2. Please do not nominate the same town in the same category, the panel will vote on each town just once.

To nominate your favourite East Gippsland towns go to [100 Best Aussie Towns - Nominations Survey](#)

Nowa Nowa Game Meats Hub Pilot

Closes 31 January

Nowa Nowa Futures are inviting stakeholders to submit an expression of interest to help shape a game meat hub, including micro abattoir operations, value adding, harvesting, transport, training, compliance, and complementary industry partnerships.

If interested scan the QR and complete an EOI and return it by email by 31 January 2026 to info@nowanowa.org. If you have questions prior to submission contact Isaac Carne hello@isaaccarne.com.



2025/2026 Leadership and Mentoring Program Open Now

Closes 1 February

Applications are now open for Agriculture Victoria's Rural Women's Network Leadership and Mentoring Program, closing at 11.59pm **1 February 2026**. The initiative addresses

underrepresentation of women in agricultural leadership roles by providing targeted support, mentorship, and networking opportunities, developing skills and confidence to participate in leadership and decision making, both in agriculture and the broader community.

If you live in regional (including peri-urban fringe) and rural Victoria and work across the agriculture sector and supply chain, you are encouraged to apply. Leadership can take many forms and is not always underpinned by gaining 'positions of authority'. Many women exhibit leadership qualities in quiet, often unrecognised ways – they may not even see themselves as leaders. We want these women to apply for the program as well. Financial assistance is available for successful applicants for the program, accommodation, childcare and travel.

Purpose: Empower women in agriculture by addressing underrepresentation in leadership roles through mentorship, networking, and skill development.

Eligibility: Women living in regional, rural, or peri-urban Victoria working across agriculture and its supply chain. Leadership can be formal or informal.

Support: Financial assistance available for program fees, accommodation, childcare, and travel.

Key Dates Applications close 1 February 2026 (11:59 PM), Residential sessions: 3–5 March 2026 and week of 11 May 2026, Final workshop & graduation: 27 May 2026.

Apply & Info: Rural Women's Network | Agriculture Victoria [Rural Women's Network | Networks | Support and resources | Agriculture Victoria](#)

Contact: Program Coordinator – 0421 405 999 or vrwnetwork@agriculture.vic.gov.au

Lambex

We're calling on the entire sheep industry across Australia — if you could hand one idea or opportunity to a young trailblazer, what would it be?

Tell us what needs inventing, rethinking or fixing in the sheep and lamb industry. Workforce, markets, welfare, processing, climate, succession — nothing is off the table.

Your insight could spark the next breakthrough at Lambex share your ideas here [Coles Trailblazers Competition | Lambex26](#).

If you'd like to talk through an idea or ask about the Trailblazers program, email trailblazers@lambex.org.au

Biosecurity preparedness for key grain business survey

Australia's grains industry relies on strong biosecurity to protect our crops, markets, and livelihoods. Governments and industry invest heavily in preparedness and research to make sure we have the best tools and knowledge to respond to emerging threats.

Plant Health Australia (PHA), together with The Grains Research & Development Corporation (GRDC) and Grain Producers Australia (GPA), are working to better understand the differences in perceived biosecurity risks and how they're managed across the industry and across the country. Your insights are an important part of this.

Please contribute by completing this survey [biosecurity preparedness at key grain businesses survey](#).

Igniting Leadership Program Now Open

Closes 17 February

Leadership Victoria's 5-day Igniting Leadership Program is designed for people at a pivotal stage of figuring out how to lead with confidence, influence without authority, and find their voice in the room, all while navigating the pressure to perform. It's a practical, energising introduction to adaptive leadership and other frameworks that help build the mindset, skills and connections to lead with impact. Series One will be delivered throughout March.

The **last day to register** is **17 February** at [igniting leadership program | leadership victoria](#)

Looking for other options to deepen your leadership skills? All LV 2026 programs are open for registration, starting with

Leader Evolution Series 1 | 25, 26 & 27 March

A 3-day program designed for mid-senior leaders in the middle of competing priorities who need practical tools, a shared leadership language, and renewed energy to lead well under pressure. [Leaderevolution program | leadership victoria](#).

Women's leadership Series 1 | 6, 7 & 8 May 2026

A 3-day residential retreat for mid-senior women leaders, to strengthen leadership capability, learn to navigate complex challenges with confidence, and build a new leadership peer group. [Women's leadership program | leadership victoria](#)

Women in STEM and Entrepreneurship Round 5 Open

Closes 18 February

Round 5 of the Women in Stem and Entrepreneurship Grant is now open, with opportunities for organisations to deliver programs that inspire women and girls in science, technology, engineering and maths.

Australian businesses, publicly funded research organisations, vocational education and training providers, TAFE institutions and not-for-profit organisations are able to apply to deliver projects that support women and girls to build STEM skills and succeed in STEM education and careers.

Support is also available to help you prepare for future grants:

- Register for a free mentoring for growth session to explore your business opportunities or challenges with experienced volunteer mentors.
- Learn how to prepare and write a strong grant application

[Women in STEM and Entrepreneurship Round 5 | business.gov.au](#)

Calm The Farm Workshops: Supporting Mental Health in Agriculture

From 1 December 2025, all Victorian employers – including farming businesses – must identify, assess and control psychosocial hazards, giving mental health risks the same priority as physical risks.

As many farm owners and workers may not understand how these risks affect wellbeing, productivity and business sustainability, NCFH are looking for leading industry organisations to partner with NCFH to deliver our [calm the farm workshops](#).

These workshops are designed to help farmers, farm workers and farm managers reduce work-related stress and improve mental health in farming environments. Participants explore risk factors, identify solutions and develop a plan to stay positive and productive.

If your organization is interested in partnering with NCFH contact Cecelia Fitzgerald on 03) 5551 8533 or email cecilia.fitzgerald@wdhs.net, to find out more go to [Home | National Centre for Farmer Health](#) and subscribe to the newsletter: [National Centre for Farmer Health](#).

Business Skills Mentoring Program

Closes 27 March

The Victorian governments Business Skills Mentoring Program aims to give small business owners the confidence to invest, expand and innovate. It will provide up to 1,000 eligible small business owners with 3 one-hour mentoring sessions. These sessions are to be used within 3 months.

The program will help:

- Build skills
- Set goals
- Navigate challenges that are relevant to your business needs.

Mentors can provide advice on a wide range of business topics including:

- Marketing
- Communication
- Finance
- Strategic planning
- Digitalisation
- Change management

Expressions of interest will close 5pm Friday 27 March 2026, or earlier if places are filled.

[Business Skills Mentoring program - Business Victoria](#)

INFORMATION

Rural Aid

Rural Aid works with councils, stakeholders, and rural communities to strengthen preparedness, response, and recovery before, during, and after disasters and drought. Our goal is simple: ensure farmers and communities have the right support at the right time.

Rural Aid take a practical, community-led approach that combines:

- Everyday support
- Mental health and wellbeing care
- Local recovery initiatives

This includes direct assistance for farmers, access to our mental health and wellbeing team, and programs that help strengthen small towns and local economies. Flyers are attached for you to share within your networks.

Registration matters: farmers must register with rural aid to access assistance. It's quick and can be done anytime via our [why should i register with rural aid?](#). Register early so we can provide timely support—from mental health care to disaster assistance.

Once registered at [rural aid financial assistance – rural aid farmers assistance](#) farmers can access a range of services through our [about - rural aid - supporting rural communities](#) page, or call 1300 327 624.



Victoria Gives Virtual Fencing the Green Light

Victorian cattle producers can now use virtual fencing and herding technology following new regulations under the Prevention of Cruelty to Animals Act 1986. These changes provide clear safeguards and requirements, giving farmers access to smarter tools that improve livestock management while prioritising animal welfare.

Virtual fencing offers benefits such as better pasture management, labour savings, improved safety, enhanced animal health, environmental protection, and rapid response during emergencies. Victorian manufacturers can apply to Agriculture Victoria for approval of their technology. Trials at Ellinbank last year demonstrated the effectiveness of solar-powered smart collars, which use audio, vibration and electronic cues to guide cattle via a mobile app. The trial showed cows adapted well, with milk yields remaining consistent, highlighting the potential of virtual fencing to boost productivity and sustainability. For more information, visit Agriculture Victoria or Dairy Australia.

For more information visit [Using virtual fencing and herding for cattle | Virtual fencing for livestock | Electronic collars | Prevention of Cruelty to Animals Act | Animal Welfare Victoria | Livestock and animals | Agriculture Victoria](#) and [Virtual fencing and herding option now available to all dairy farmers, News | Dairy Australia](#)

Tomato Potato Psyllid

Agriculture Victoria has developed a new arrangement for pest free production site for Tomato-Potato Psyllid (PS-66), which was released on 5 January 2026. This procedure applies to protected cropping systems only.

This arrangement is relevant for growers, packers, and nursery businesses who produce, pack, and dispatch host or carrier plant products (e.g. Nursery stock, fruit and vegetables, cut flowers, herbs) and who want to certify consignments into sensitive interstate markets based on freedom from TPP (*bactericera cockerelli*).

For more information, including guidance, posters (collateral) and links to interstate import conditions, please visit: agriculture.vic.gov.au/tpp

News/articles/factsheets

- [young horties](#) - Australia's first national network created specifically for all young people working across the horticulture supply chain
- [australian grower magazine - summer 2025/26](#)
- [growing innovation newsletter](#)
- [farm biosecurity manual](#)
- Podcast - [agriculture insights: olivia betts on armyworms and agronomy](#)
- Podcast - [episode 6: a bushfire recovery story, with matt zagami](#)
- Podcast: [seeds of future success - young voices in horticulture](#)
- Webinar: [launch of the 2025 fundamental guidelines for fresh produce food safety](#)
- Webinar - [ai unpacked: practical tools for vegetable growers](#)

- [food safety standards](#) for berry, melon, and leafy vegetable growers
- [growing leaders - industry specific leadership development program](#)
- [funding available to boost cold workforce participation in agriculture](#)

Soil Moisture Probe update #31 Key messages

December Soil Moisture & Rainfall Summary

- **Rainfall:**
 - December averaged 38.9 mm, a sharp drop from 116 mm in November.
 - Range: 76 mm at Buchan South to 6 mm at Rosedale.
- **Soil Moisture:**
 - Despite November's rain, hotter days and limited follow-up rain caused rapid moisture decline.
 - Average soil moisture fell from 75% (Dec 1) to 52% (Jan 1), still higher than last year.
- **Soil Temperature:**
 - Increased from 14.6°C (Dec 1) to 17.0°C (Jan 1) (depths vary by site).
- **Implications for Farmers:**
 - Monitoring soil moisture helps with supplementary feeding, autumn sowing plans, stocking rates, and regrowth estimates.
- **Project Note:**
 - This update is part of the Gippsland Soil Moisture Probe PDS, funded by Agriculture Victoria, MLA, and East Gippsland Shire.
 - Project has now concluded.

More info: agriculturevictoria.cmail19.com/t/r-e-tkhyykh-l-bujudydukj-y or contact **James Paulet (0447 695 839)**.



Gippsland Community Legal Service

GCLS can help people who live, work or study in Gippsland with their legal issues.

The assistance that can be provided will depend on the type of legal issue that you have. Some areas of law are not within their practice areas, or are extremely complex and require specialist expertise, such as commercial law. Even if they can't help directly, they may still be able to provide you with a referral to a lawyer or service that can assist.

Gippsland Community Legal Service can help with a range of legal problems, including:

Advance statements	Consumer credit and banking disputes
Change of name	Consumer complaints
Coronial enquiries	Debts
Discrimination	Employment
Family violence	Family law
Insurance	Mental health
Fines and infringements	Guardianship and administration
Motor vehicle accidents where property is damaged	Police complaints
Neighbourhood disputes	

Personal safety intervention orders
Victims of crime (VOCAT)

Tenancy
Bushfires

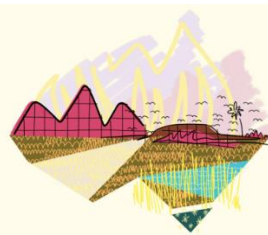
If you would like further information, call **1800 004 402** or go to [Free Legal Advice - Gippsland Community Legal Service](#) to fill out the request an appointment form.

Clean up Australia - 35 years of cleaning up together

Over the years, more than 23-million wonderful volunteers have stepped up, pulled on their gloves, and donated their time to improve the environment.

Registration for Clean Up Australia Day is free for communities and schools (businesses pay a small fee) and includes a free clean up kit with everything you need to run a safe and impactful event – including our public liability insurance cover. Waste from registered sites can be disposed on for free when taken to your closest council transfer station in Clean Up Australia Bags. Register interest at [Clean Up Australia : Home](#)

COMMUNITY CLEAN UP



Coping With Emergencies and Disasters

DFFH has resources to help adults, children and communities prepare for and recover from disasters and emergencies. Recovery is different for everyone impacted by an emergency or unexpected event. For some people, recovery is ongoing.

Road to Resilience podcast The Road to Resilience podcasts may help if you have been impacted by an emergency. It provides practical advice you can use when it suits you.

Episode 1 explores the emotions people have after an emergency. It features a story about flood recovery.

Episode 2 focuses on children, families and trauma. It features what trauma can look like for children and adults and has advice on the recovery process. [Coping with emergencies and disasters - DFFH Service Providers](#)

Take a Break – explore NCFH website

Whether you're looking to work on your mental health, improve farm safety or find something to listen to in the paddock, there's plenty to explore [Home | National Centre for Farmer Health](#)


- [Campfire podcasts](#) are ideal for long drives or hours in the tractor cab, sharing real stories and expert insights [Episode 23: "Check Up and Thrive: Unveiling the Power of a Farmer Health Check" | National Centre for Farmer Health](#)
- [The mind maintenance toolkit](#) offers short, self-paced modules tailored to farmers with practical tools and strategies to keep your mental wellbeing on track [Mind Maintenance Toolkit | National Centre for Farmer Health](#)
- The [farmer wellbeing toolkit](#) provides easy-to-read fact sheets covering common health and safety issues relevant to farm life [Farmer Wellbeing Toolkit | National Centre for Farmer Health](#)

- Farmerhat is a free online health assessment tool to help you identify your health, wellbeing and safety risks on the farm [Farmer HAT \(Health Assessment Tool\)](#) | [National Centre for Farmer Health](#)

Our online support hub is about making it easier to find the right help, when and how you want it, developed for Australian farmers and agricultural communities to easily access a range of mental health resources, support and practical tools to help you navigate tough times, manage your wellbeing and stay resilient [Support Hub | National Centre for Farmer Health](#)

COUNCIL INFORMATION

East Gippsland Livestock Exchange Sale Dates



SALE DATES

January - June 2026

*Dates are subject to change by Stock Agents

JANUARY						
Sun	Mon	Tue	Wed	Thu	Fri	Sat
				1	2	3
4	5	6	7	8	9	10
11	12	13	14	15	16	17
18	19	20	21	22	23	24
25	26	27	28	29	30	31

FEBRUARY						
Sun	Mon	Tue	Wed	Thu	Fri	Sat
1	2	3	4	5	6	7
8	9	10	11	12	13	14
15	16	17	18	19	20	21
22	23	24	25	26	27	28

MARCH						
Sun	Mon	Tue	Wed	Thu	Fri	Sat
1	2	3	4	5	6	7
8	9	10	11	12	13	14
15	16	17	18	19	20	21
22	23	24	25	26	27	28
29	30	31				

APRIL						
Sun	Mon	Tue	Wed	Thu	Fri	Sat
			1	2	3	4
5	6	7	8	9	10	11
12	13	14	15	16	17	18
19	20	21	22	23	24	25
26	27	28	29	30		

MAY						
Sun	Mon	Tue	Wed	Thu	Fri	Sat
					1	2
3	4	5	6	7	8	9
10	11	12	13	14	15	16
17	18	19	20	21	22	23
24	25	26	27	28	29	30

JUNE						
Sun	Mon	Tue	Wed	Thu	Fri	Sat
31	1	2	3	4	5	6
7	8	9	10	11	12	13
14	15	16	17	18	19	20
21	22	23	24	25	26	27
28	29	30				

Prime Cattle Sales - 8.30am

Store Cattle Sales - 9am

Public Holiday - no sales

Sheep Sales - 10am

Special Sale - 9am

The following independent Stock Agents operate at the East Gippsland Livestock Exchange

Elders Bairnsdale - 035153 6100
 Bill Wyndham & Co - 035153 0533
 Nutrien East Gippsland Livestock - 035153 1144

East Gippsland Shire Council has no affiliation with nor endorses any livestock agent

Disease notification:
 Emergency Animal Disease Hotline:
 1800 675 888

Your Say on Projects

Check out [Your Say East Gippsland](#), a council online platform that lets you share what you think about the projects, services and places that matter to you. Your experience is important to help us understand community needs and interests.

- [Public Toilets Review - East Gippsland | Your Say East Gippsland](#) we want to hear your thoughts on the 114 council-managed public toilet locations across our shire. These facilities are an important part of our public spaces, and your feedback will help us shape how we manage them now and into the future. **Closes 9 February 2026.**

Grant Guru

Looking for funding for community projects, business ideas, or events? Don't forget about the **East Gippsland Grant Finder**, provided free by **East Gippsland Shire Council** in partnership with **Grant Guru**.

- The portal helps local businesses, community groups, not-for-profits, and individuals discover grants from local, state, and federal sources, as well as corporate and philanthropic funding. Users can save favourites, receive email alerts, and access grant-writing tips. For more information, visit the [East Gippsland Grant Guru portal](#).

Handy links

[Business Victoria](#)
[Nex Business Farming Wellness](#)
[Australian Taxation Office](#)
[Destination Gippsland Industry News](#)
[Supporting East Gippsland Businesses Facebook Group](#)
[East Gippsland Economic Profile](#)



There are many more programs and projects being delivered in the region, contact your local agencies, production group or ag business to find out more.

This is compiled by council for general information only.

If a friend or a neighbour would like to receive a copy of this newsletter, please email Kaylene Wickham agribusiness development officer East Gippsland Shire Council at kaylenewi@egipps.vic.gov.au, call 5153 9450 or register online at [agrinews newsletter](#).



Maffra and Districts
Landcare
Network



Facial Eczema in Livestock Webinar with Graeme Sait

Graeme Sait is an expert in **nutrition** and **biological farming**, with a passion for sharing his insights on managing facial eczema by treating the root cause.

Graeme will explain the disease, how it functions and how we can treat it with **on-farm microbial multiplications, multispecies pastures** and **mineral applications**.

Graeme will be joining us on a Zoom call to share management options that can reduce impacts from this disease in our own district, protect animal welfare and maximise profits while improving human health.

✦ Join us for this inspiring and actionable webinar.

Date: Wednesday 4th February 2026

Time: 10.30am – 11.30am

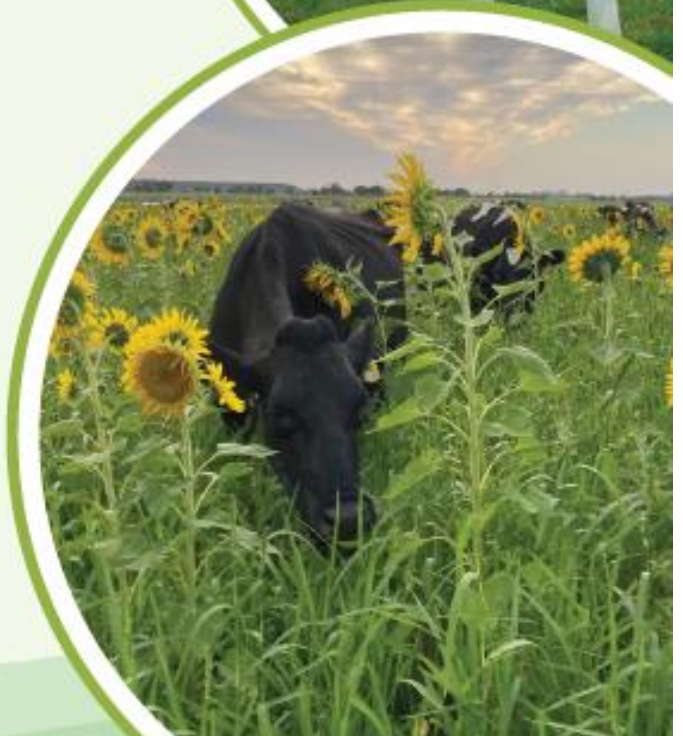
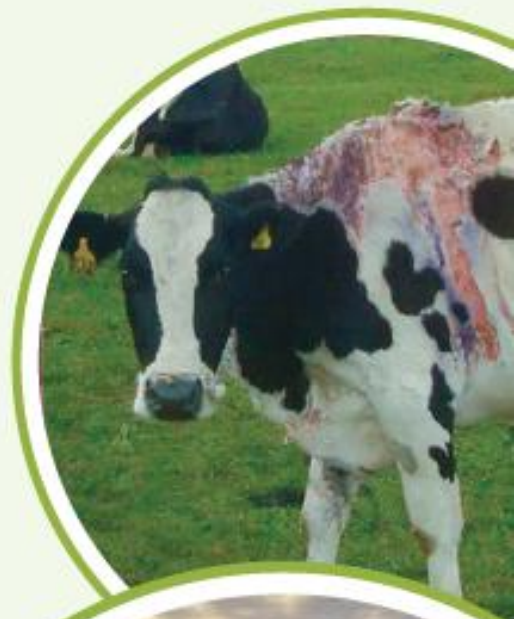
Location: Online & Newry Hall
(Upper Maffra Mechanics Institute),
Newry.

Tickets: FREE!

Register

<https://www.trybooking.com/DIQTV>

☎ Callam 0401 795 026



EAST GIPPSLAND MARKETING INC

BUSINESS NETWORKING EVENT



SAVE THE DATE
3RD WEEK OF FEBRUARY
2026 BAIRNSDALE

KIM KLEINITZ PRESENTS SESSION 2

Navigating the New Psychosocial Hazards
Regulations: **Turning Psychological Safety into**
Your Superpower



Kim Kleinitz
Coaching & Consulting

egn

Future-proof your family farm business at Sale

Complimentary 2-day workshop for Gippsland farmers

Farmers are invited to participate in a 2-day workshop to help 'future-proof' your family farm business with adaptive planning skills. Develop practical strategies to manage climate risk, build resilience and shape a stronger, more adaptable business.

Presenter Dr Kate Burke is an agri-strategist and educator with extensive experience across technical, commercial and people-focused aspects of farming.

Kate provides insights into crucial farm success factors, including:

- managing climate variability and uncertainty
- optimising productivity
- farm financial performance
- people, leadership and succession.

Participants will:

- Work out what's most important to them.
- Understand the productivity, people and profit components of their business.
- Identify strategies for balancing growth and risk.
- Prioritise and plan.

Participants are eligible to review their business plans post this workshop in a one on one session with Kate.

Past participants said:

'We appreciated the time away to focus on the bigger picture with our business partners.'

'All this stuff is connected; most courses just deal with one topic in isolation. This workshop is unique.'

Details

Date: Wednesday 25 and
Thursday 26 March 2026

Time: 8:30 am arrival time for a 9
am start until 3 pm.

Location: Sale Greyhound Club

Sale Showgrounds
Maffra-Sale Rd
Sale VIC 3850



Registration

Numbers are limited and registration is essential.

This event is catered.

Register at
<https://www.trybooking.com/DHYSG> or
scan the QR code to register.

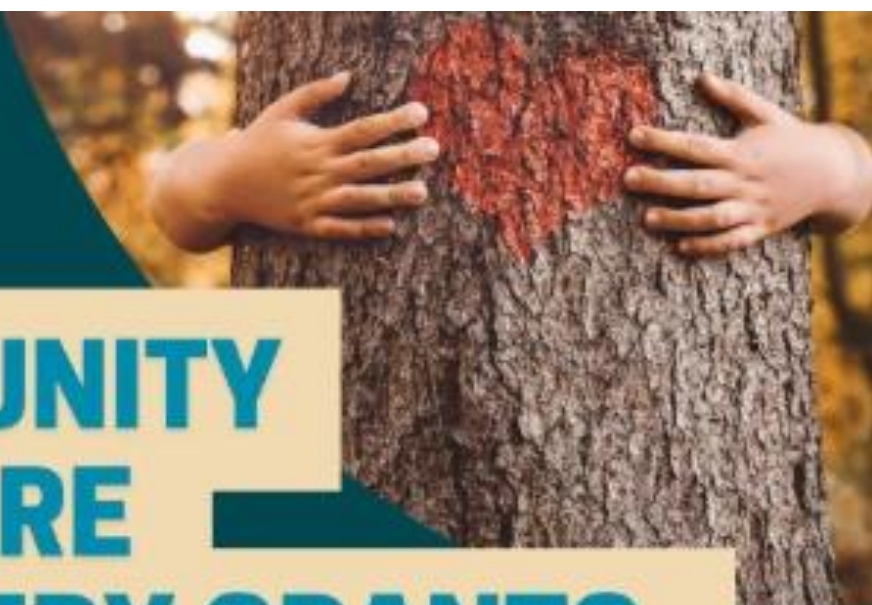
Further information:

Julio Vargas 0428 316 018

James Paulet 0447 695 839



**GIPPSLAND
COMMUNITY
FOUNDATION**



COMMUNITY BUSHFIRE RECOVERY GRANTS

**Grants of up to
\$50,000 are
available to
support local
projects that
strengthen East
Gippsland's
community-led
recovery.**

This is the seventh grant round supporting our region's long-term recovery following the 2019-2020 Black Summer Bushfires. Funded from an original \$8.8 million in public donations, the Bushfire Recovery Open Grants Round program has been delivered by Gippsland Community Foundation since 2021.

Charitable organisations, not-for-profits and community groups are encouraged to apply with projects that offer benefit to East Gippsland fire-impacted communities. Eligibility and Grant Guidelines can be found on our website.

APPLICATIONS OPEN
1ST - 28TH FEBRUARY 2026
www.gippslandcf.org.au

Applicants are encouraged to discuss projects prior to application:

- Michelle 0499 241 917
- Cherie 0426 537 189

Are you a farmer who could use some help?

Rural Aid is committed to providing support to farmers and rural communities.

Whether you're coping with or recovering from a serious event, or preparing for future challenges... we're here and ready to help.

REGISTER NOW

for **Farmer Assistance & Support**



ruralaid.org.au
1300 327 624



LANDCARE EXPO 2026 *Orbost Show*

Celebrating 40 Years of Landcare

Stalls, food, beer, music, & skills **9th March**



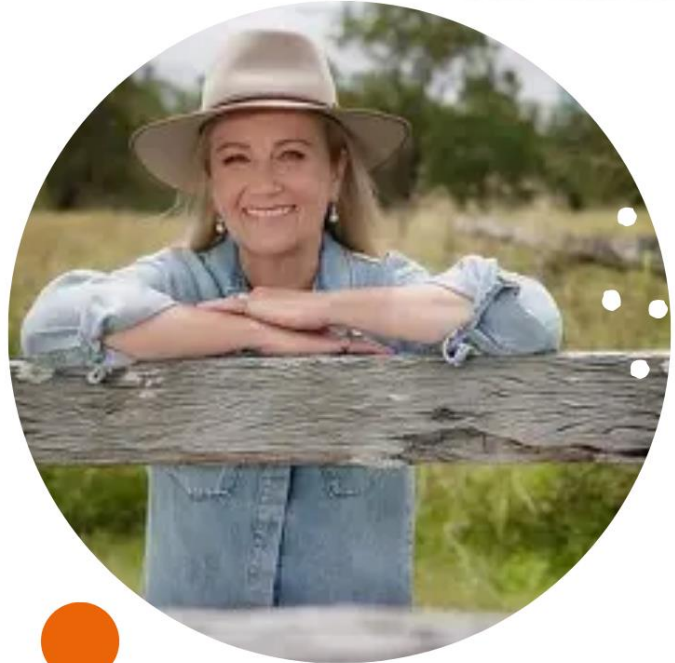
Presenter Pip Courtney

has been host & reporting for the national rural affairs program **Landline** for 30 years and will present on **Sustainable Farming and Soils**.

She's won numerous awards reporting on agriculture, business, sport, the environment, medicine, and education. Qld's Rural Journalism Hall of Fame & the National Star for Rural Broadcasting.

Reporting has taken Pip to every Australian state and territory, as well as China, Peru, Timor Leste, the USA, Cambodia and Laos.

Pip loves Tasmania, horses, cats, champagne, and sheep.



STALLS & SKILLS

Hand Shearing
Treasure Hunt - 'grown & caught'
Horse Corn Grinder
Solar Powered Trailer
Print a T-Shirt
Hand Spinning
FREE 'fire wise' plants to give away
& MUCH MORE

**ORBOST SHOW OPENS -
MUSIC STARTS @9AM**

**QUESTIONS: Please contact
Josh Puglisi - 0419 317 509 or
Tiwana Merritt - 0414 801 703**



The Sustainable Agriculture Facilitator and this TopSoils event is supported by the Australian Government through funding from the Natural Heritage Trust under the Climate-Smart Agriculture Program